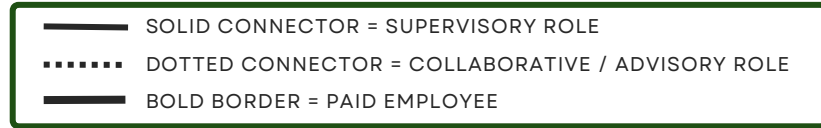
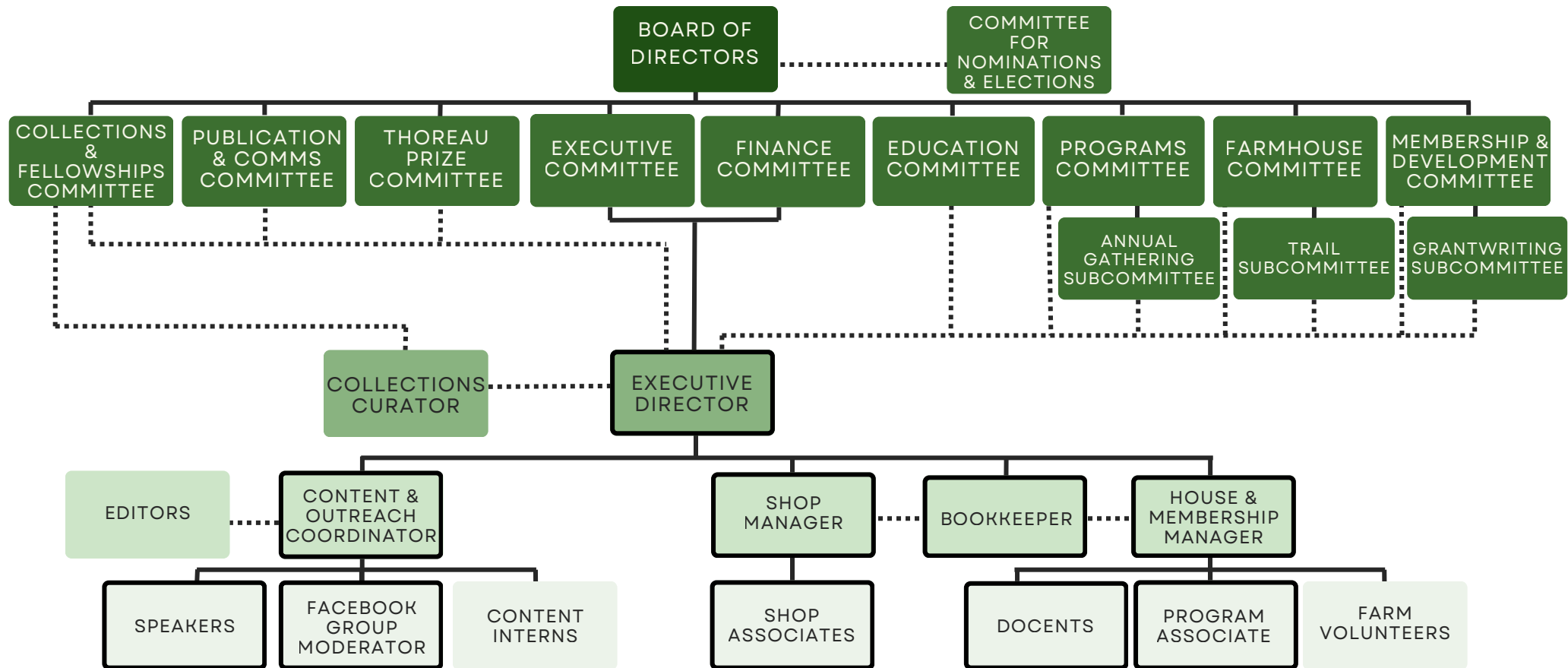


# ORGANIZATIONAL CHART



This proposed structure maintains current Thoreau Society committee areas with slight changes aimed at stewarding emerging scholars and sharing our collections more deliberately.



The new role of **Content & Outreach Coordinator** is envisioned as a critical connector—linking the questions and interests of our audiences with our rich resources and programs, and amazing people. They will weave together our collections, fellowships, publications, and public programs into cohesive stories that expand visibility, engagement, and understanding across our community, supporting rigorous scholarship and discovery.

The expanded role of **House & Membership Manager** would focus on strengthening how people are welcomed and cultivated as active participants, valued members, thoughtful scholars, and generous volunteers. Through their entire journey with the organization, we want people to connect with Thoreau's life and works in ways that feel authentic to them and meaningful in today's world.

For a more detailed description of the committees, please see the committee list.